

Recycled Fibre, RCF plant

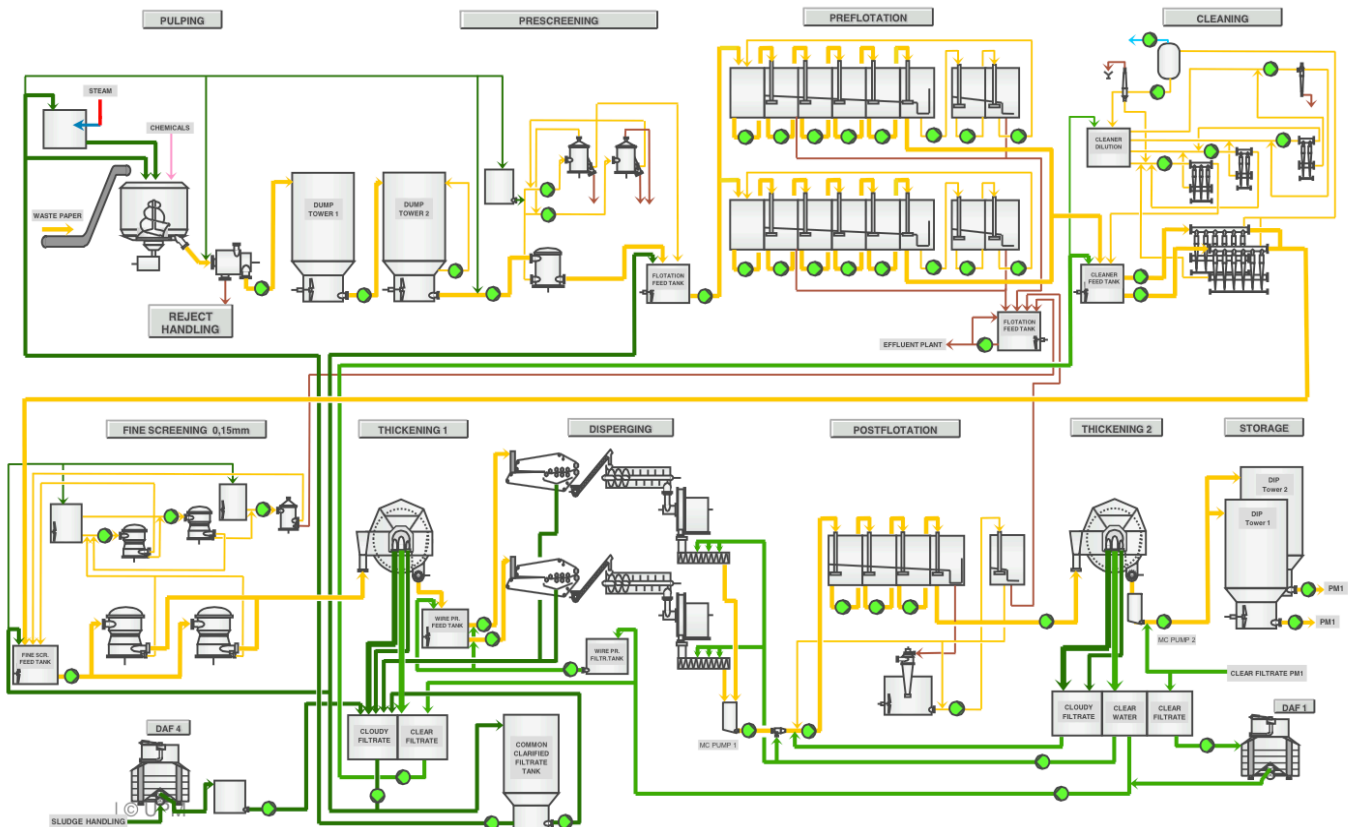
Technical data:

- Built 1989/2003 for news print PM –lines usage
- 350 bdt/day output
- 80% yield
- 2 loop system
- Input materials – Newspapers & Magazines

Major Equipment

- Infeed conveyors FMW
- Batch Pulper Voith
- Coarse Screens – 3 stages Voith
- Flotation – 2 lines Voith
- Cleaners Albia (Celleco)
- Fine Screens (4 stage cascade 1989/2003) Voith
- Disc filters Loop 1 1989 Headamora
– Loop 2 2003 GL&V
- Wire Presses – 2 lines Andritz
- Disperger Voith
- Reject Handling FMW

Plant line diagram:



Drum Pulper/Coarse Screens:

VOITH:



Coarse Screens – Ahlstrom (Andritz)



Flotation

- **Preflotation**

2 lines - Each

- Mixing Cell
- 4* Primary cells
- 2* secondary cells

- **Post Flotation**

- Mixing Cell
- 3* Primary cells
- 1* Secondary cell



Cleaners and Screens

- **Heavy Cleaners (Albia)**
 - Low consistency
 - Stages
 - DLR stages



- **Fine Screens – Voith**
- **2* 1st stage VSI 35**
- **1* 2nd stage - MS 08/08**
- **1* 3rd stage - VSI 10**
- **1* 4th stage MST 05/05**



Disc Filters

Disc Filter

- Loop 1 (1989)

- Ahlstrom



Disc Filter

- Loop 2 (2003)

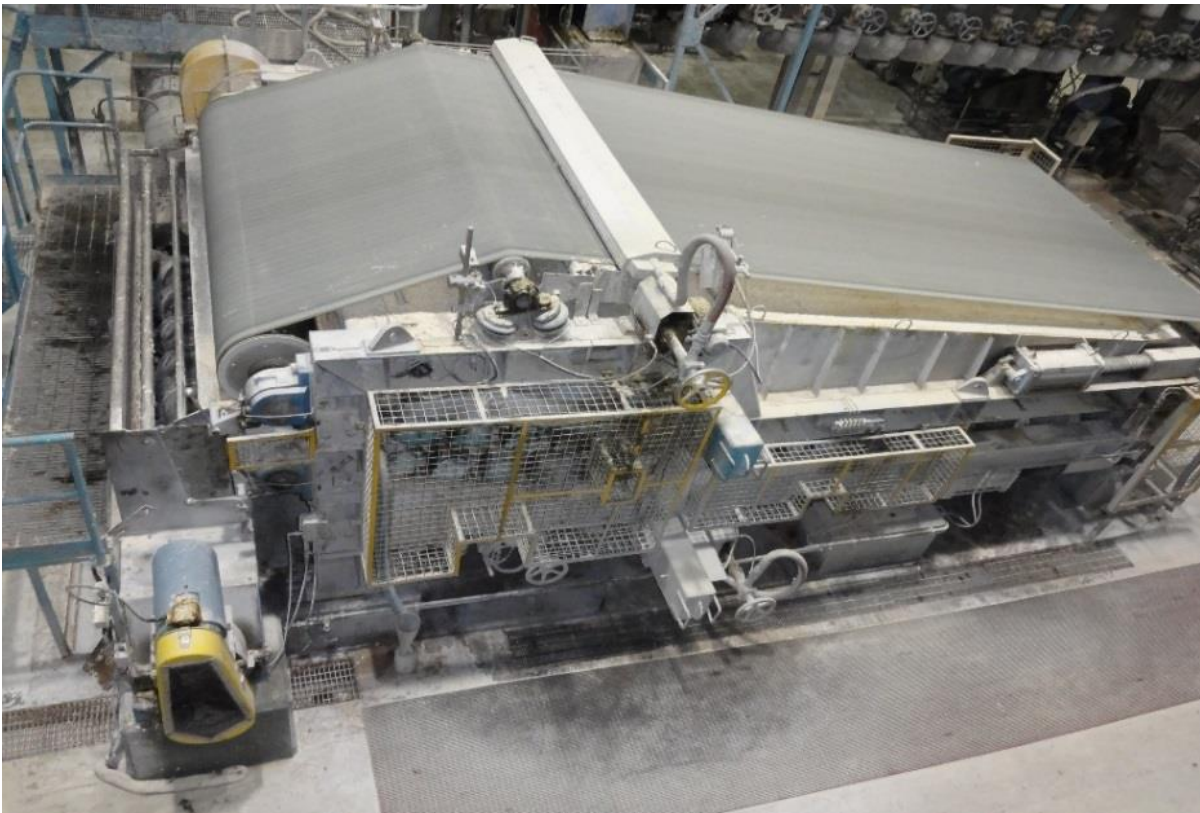
- GL&V (13 sectors of 14 in use)



Wire presses and disperger

Wire Presses

- Andritz



- Disperger + Heater
- 2 lines
- Voith 15 Z S E

