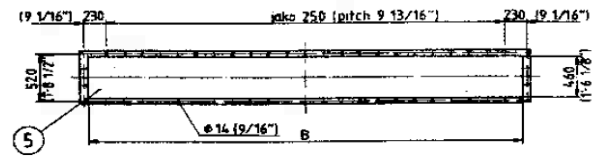
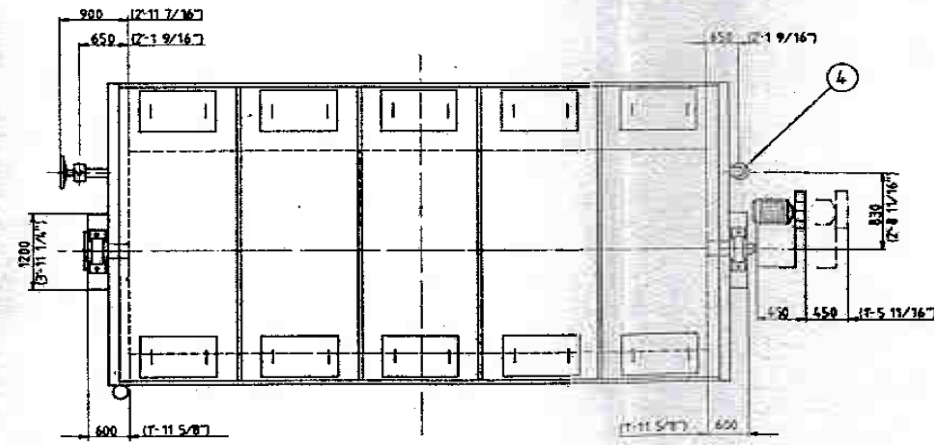
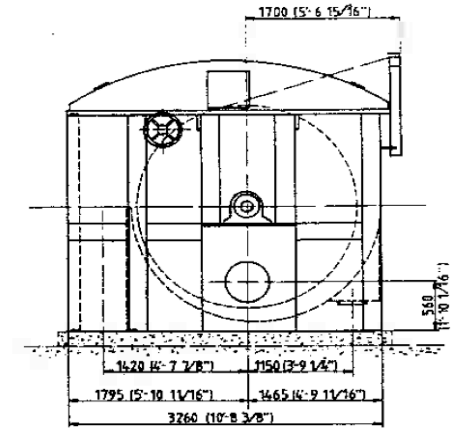
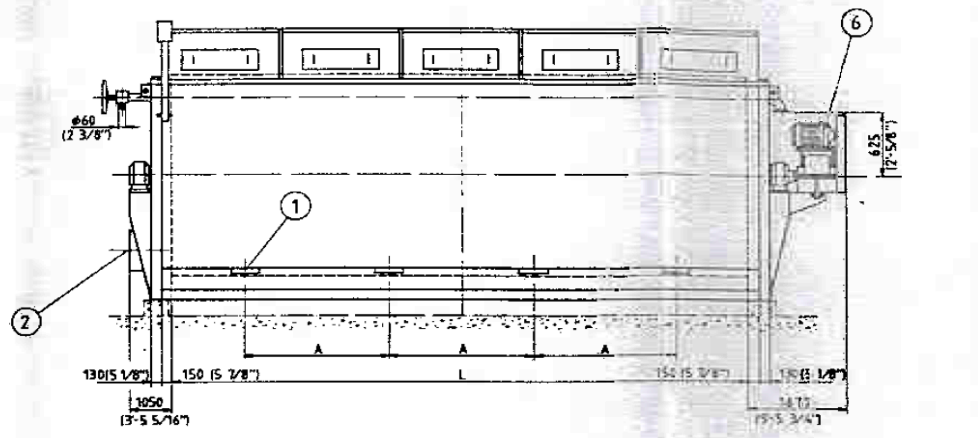
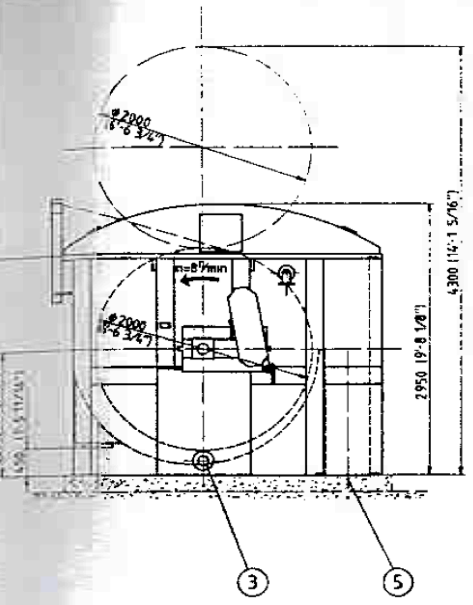


1	2	3	4	5	6	7	8	9	10	11	12	13	14	15	16	17	18	19	20	21	22	23	24	25	26	27	28	29	30	31	32	33	34	35	36	37	38	39	40	41	42	43	44	45	46	47	48	49	50	51	52	53	54	55	56	57	58	59	60	61	62	63	64	65	66	67	68	69	70	71	72	73	74	75	76	77	78	79	80	81	82	83	84	85	86	87	88	89	90	91	92	93	94	95	96	97	98	99	100
---	---	---	---	---	---	---	---	---	----	----	----	----	----	----	----	----	----	----	----	----	----	----	----	----	----	----	----	----	----	----	----	----	----	----	----	----	----	----	----	----	----	----	----	----	----	----	----	----	----	----	----	----	----	----	----	----	----	----	----	----	----	----	----	----	----	----	----	----	----	----	----	----	----	----	----	----	----	----	----	----	----	----	----	----	----	----	----	----	----	----	----	----	----	----	----	----	----	----	-----



YLEISTIEDOTE

- 1 Syöttöyhde (4 kpl) DN 200, PN 10
- 2 Suodoksen poistoyhde (1 kpl) DN 350, PN 10
- 3 Tyhjennisyhde (1 kpl) DN 150, PN 10
- 4 Kiinteä kankaan pesuputken yhde (1 kpl) DN 80, PN 10
- 5 Purkausyhde
- 6 Pääkäyttö

GENERAL DATA

- 1 Feed connection (4 pc) DN 200, PN 10
- 2 Filtrate outlet connection (1pc) DN 350, PN 10
- 3 Drainage connection (1pc) DN 150, PN 10
- 4 Connection on fixed cloth wash pipe (1pc) DN 80, PN 10
- 5 Dutlet connection
- 6 Main drive

Dynaaminen kerroin k=1,2
Dynamic factor

Kokoluokka	Pitch of feed connection	Length of outlet opening	Drum surface		Drum driving power, motor		Weight				Drum	
			mm	ft	mm	ft	Empty	Loaded	kg	lbs	kg	lbs
17-5'	815 (32 1/4")	3550 (139 3/8")	2000	78 3/4"	110	4.3	1000	15 437	3366	74 297		
18-1'	1000 (39 3/8")	4320 (169 3/4")	2500	98 1/2"	110	4.3	1600	18 755	4160	92 265		
18-5'	1195 (47 1/8")	4680 (184 1/4")	2800	110 1/4"	110	4.3	2100	21 878	4800	106 234		
19-1'	1390 (54 3/4")	5040 (198 3/4")	3100	121 3/4"	110	4.3	2600	27 001	5940	130 202		
19-5'	1585 (62 3/8")	5400 (212 1/2")	3400	133 1/2"	110	4.3	3100	32 124	6960	153 170		
20-1'	1780 (70 1/8")	5760 (226 3/4")	3700	145 3/4"	110	4.3	3600	37 247	8160	180 135		
20-5'	1975 (77 3/4")	6120 (241 1/4")	4000	157 1/4"	110	4.3	4100	42 370	9120	200 107		
21-1'	2170 (85 1/4")	6480 (255 1/4")	4300	169 1/4"	110	4.3	4600	47 493	10080	222 598		

Mitt.		trakset tehty seuraaville kiehille	
S	E	R	D
C		E	
G		H	
I		J	
K		L	
M		N	
O		P	
Q		R	
S		T	
U		V	
W		X	
Y		Z	