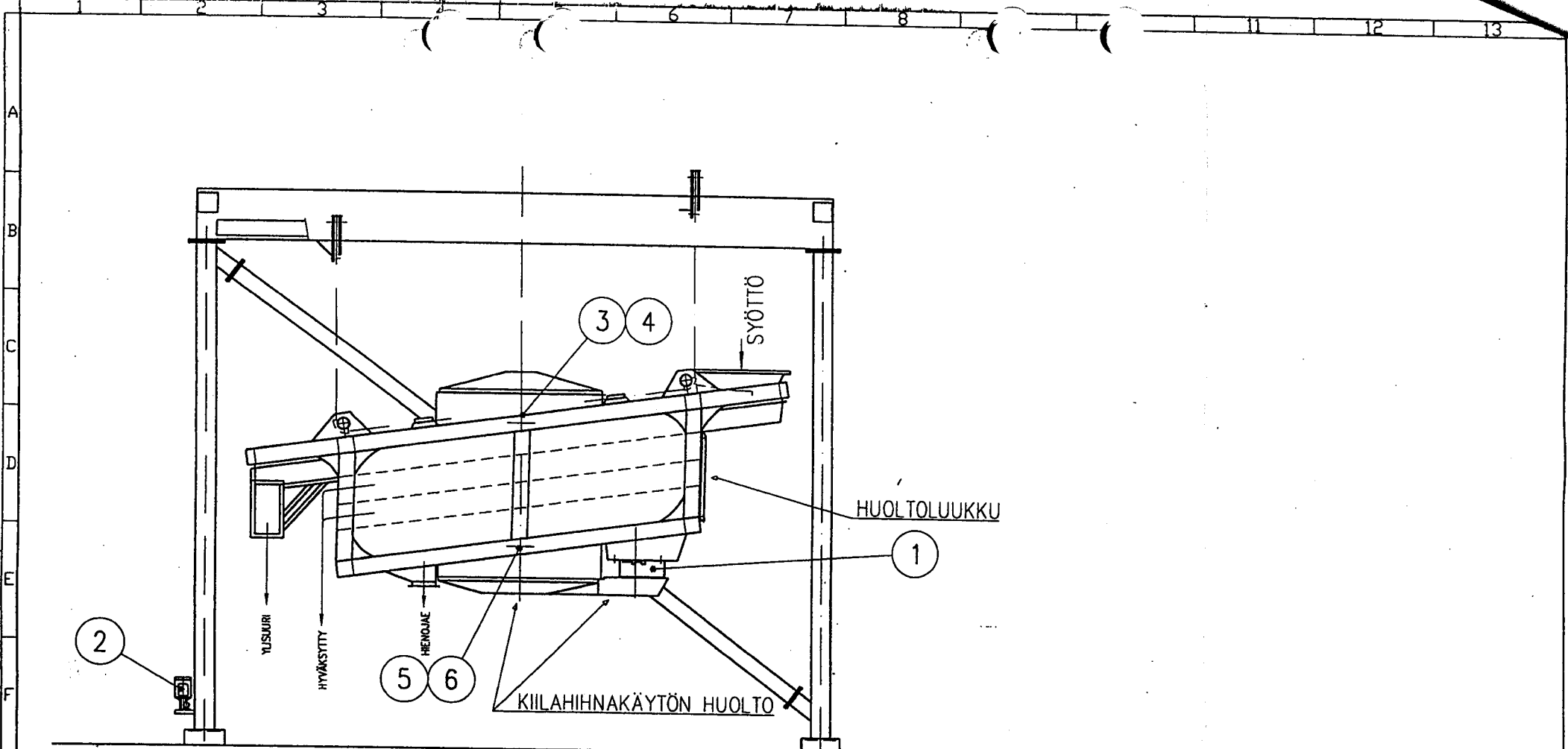


This document contains confidential and proprietary information of Andritz Wood Processing Company. All rights are reserved. No part of this document may be reproduced, stored in a retrieval system, or transmitted in any form or by any means, electronic, mechanical, photocopying, recording, or by any information storage and retrieval system, without the prior written permission of Andritz Wood Processing Company.



Qty	Item	Specification/Dimensions/Add.texts	Name/Translation	Fin. weight pcs
1pc	6	TS2 / TI2	LÄMPÖKYTKIN / LÄMPÖTILA-ANTURI	THERMO SWITCH / TEMP. SENSOR (OPTION)
1pc	5	WS2	ISKUNSYSÄYSANTURI	SHOCK PULSE TRANSD (OPTION)
1pc	4	TS1 / TI1	LÄMPÖKYTKIN / LÄMPÖTILA-ANTURI	THERMO SWITCH / TEMP. SENSOR (OPTION)
1pc	3	WS1	ISKUNSYSÄYSANTURI	SHOCK PULSE TRANSD. (OPTION)
1pc	2	M2	VOITELUYKSIKÖN MOOTTORI	LUBR. UNIT MOTOR (OPTION)
1pc	1	M1	KÄYTTÖMOOTTORI	DRIVE MOTOR (OPTION)

Rev	Rev. note	By	Date	M-film	Note

Chd./Appd.	System	Designed	Dept./Date	Title	Fin. wt. total
	CAD	R. Suppala	AKWF/2001-04-02	KENTTÄLAITE LAY-OUT	00
Gen. tol.	M-Film	Drawn	Code		Pos. no.
		RSu		HAKESEULA	
Scale	Size	ENG		SCS40-400, SCS60-600, SCS80-800	Similar dwg
1:50	A3			Drawing no. ED255fi	Revision Sheet
				WOOD PROCESSING	1 / 1