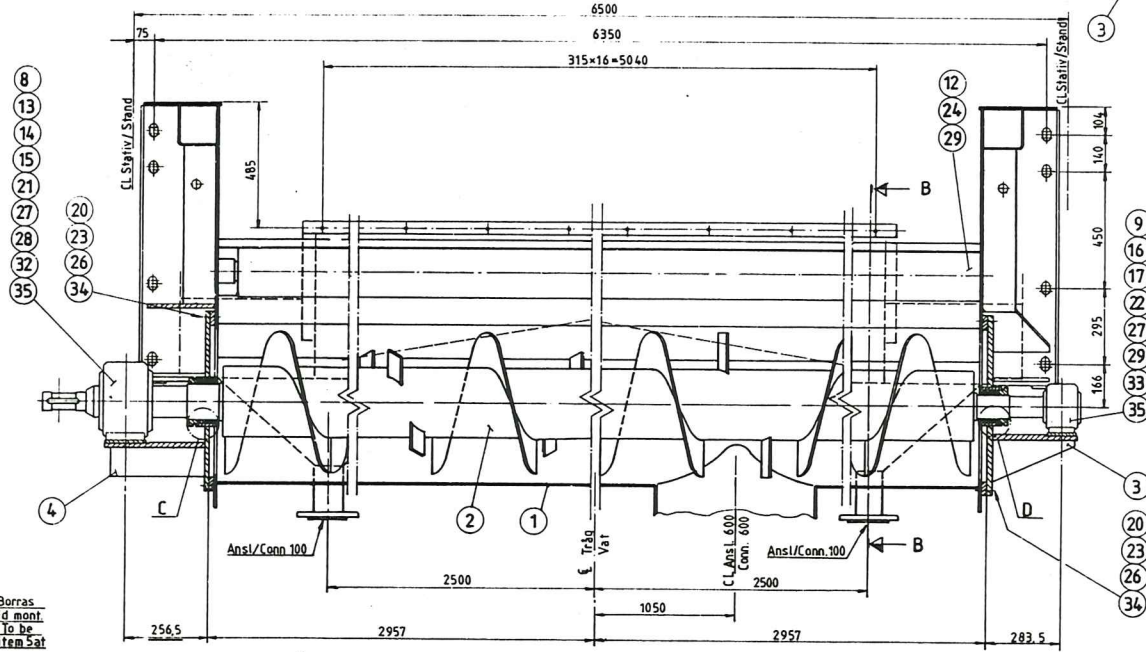
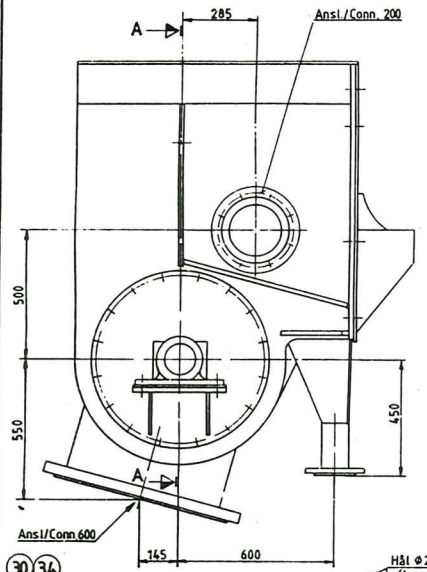
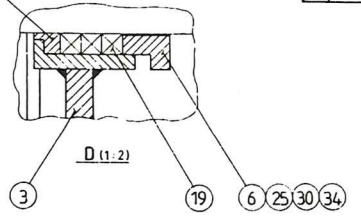
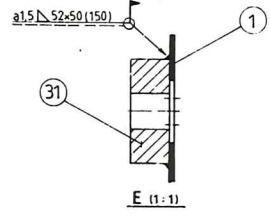
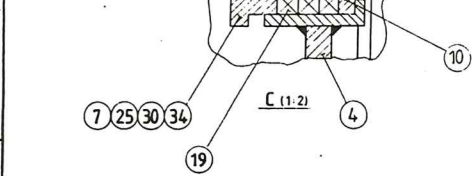


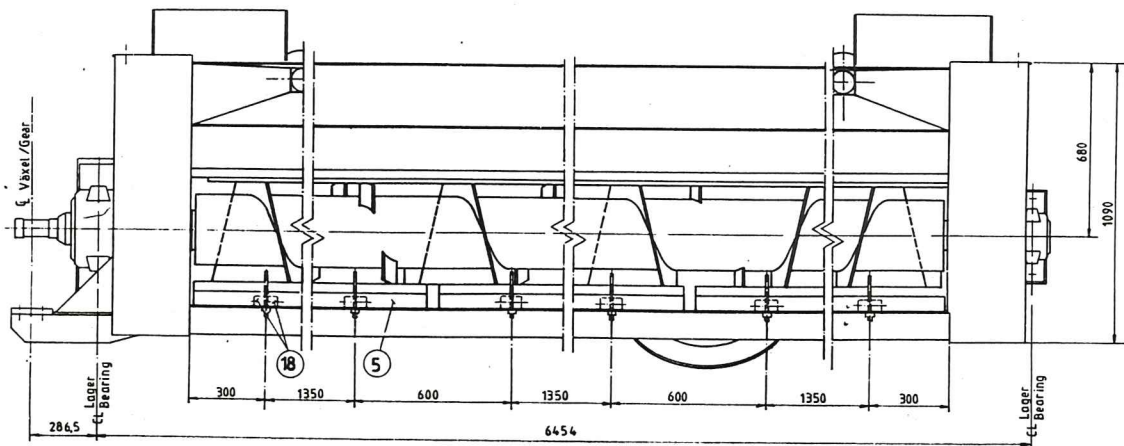
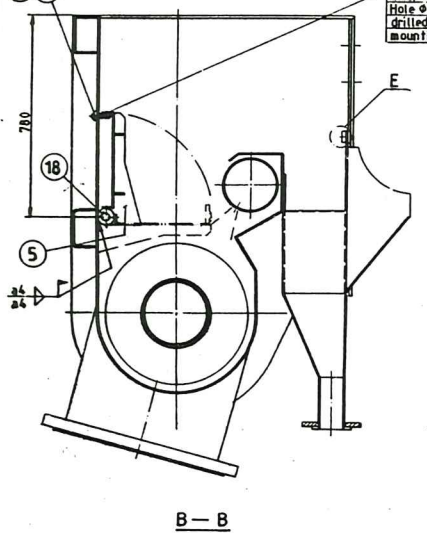
Ut	Utförande/Design
A	A
B	B

Proj	Ansvarig	Reviderad	Reviderad
1	Doc L.R.H. Gred	8/25/10	/



Vikt/Weight = 2750 kg

35	2	Matnippel	Sensor	SPM	2343	M8x24
34	42	HRB 17x30	Washer	SS 70	A4	HB250
33	2	HRB 21x36	Washer	SS 70	A4	HB250
32	2	HRB 31x58	Washer	SS 70	A4	HB200
31	1	List	Flat iron	32237-5A		
30	10	M6M 16	Nut	SS-ISO 4032	2343-80	
29	10	M6M 20	Nut	SS-ISO 4032	2343-80	
28	2	M6M 30	Nut	SS-ISO 4032	2343-80	
27	4	KP 8x90	Taper pin	SS 10	2343	
26	4	KP 12x60	Taper pin	SS 10	2343	
25	4	MPS 16x80	Stud	SS 1660	A4	
24	8	MPS 20x70	Stud	SS 1660	A4	
23	32	M6S 16x40	Screw	SS-ISO 4017	2343-80	
22	2	M6S 20x100	Screw	SS-ISO 4016	2343-80	
21	2	M6S 30x120	Screw	SS-ISO 4016	2343-70	
20	2	Packning	Gasket	S-26-120		15x
19	1	Boxpacking	Box packing	SSG1303	16x3000	
18	12	Amnesrör	Tube	2343-22	Ø56/28x40	
17	1	Lager	Bearing	SKF	222185CK/W33-H318	
16	1	Lagerhus	Bearing hous	SKF	ASNA 518 TAV	
15	1	Styrning	Guide ring	SKF	FRB10/250P	
14	1	Lager	Bearing	SKF	232285CK/W33-H7320	
13	1	Lagerhus	Bearing hous	SKF	SNA 528 TAV	
12	1	Spådrör	Diluting pipe	22237-5A		
11	1	Bussning	Bushing	42233-4A		
10	1	Bussning	Bushing	42233-4B		
9	1	Underläggspl	Spacer plate	42233-3C		
8	1	Underläggspl	Spacer plate	42233-3G		
7	1	Gland	Gland	42237-2A		
6	1	Gland	Gland	42237-1A		
5	3	Serviceplatt	Service platt	12237-7		
4	1	Gavel	End	12237-18		
3	1	Gavel	End	12237-17		
2	1	Skruv	Ø550 Screw	12237-19		
1	1	Skrivtråg	Screw val	12237-20		



Godkänd av	Enk. bror av den	Par. nr	Ins. nr

The drawings, information and subject matter thereof is the confidential, sole and exclusive property of KAMAT AB and is not to be copied, reproduced or used in any manner for any purpose whatsoever without the written consent of KAMAT AB.

Scale: 1:10

Wpm

12231-35

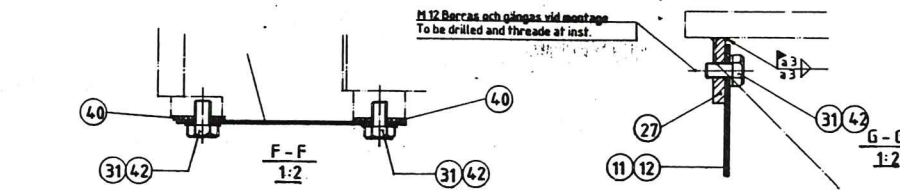
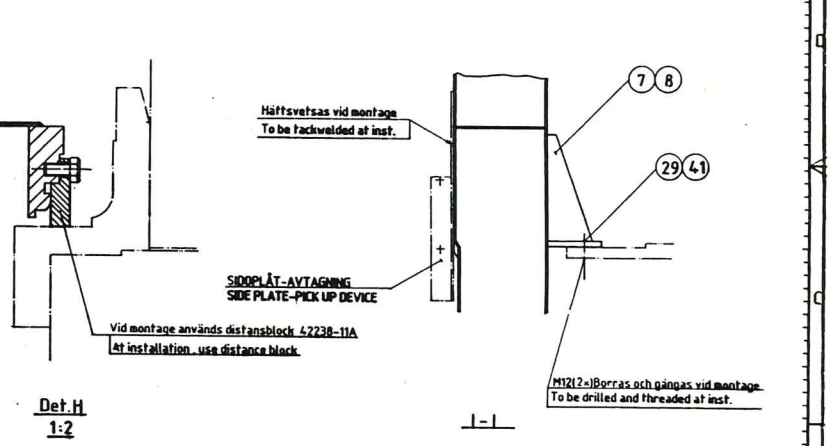
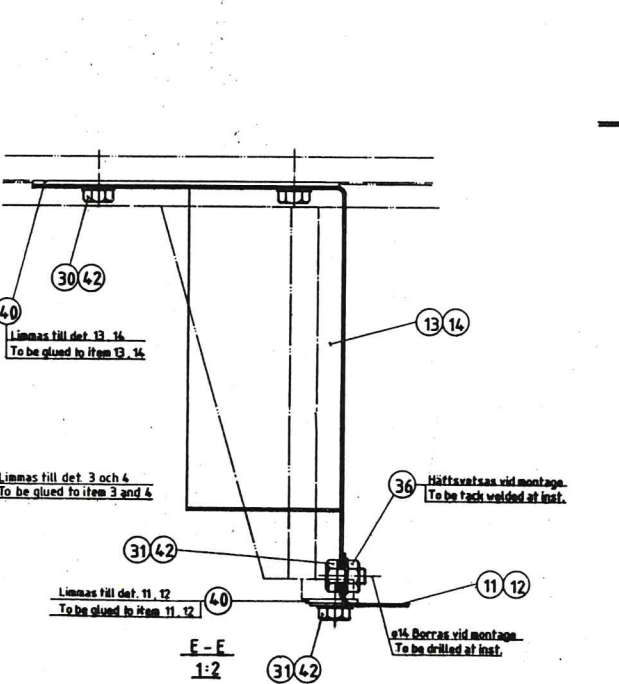
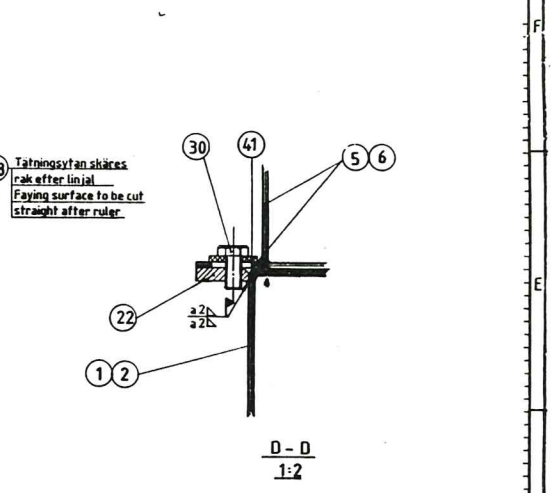
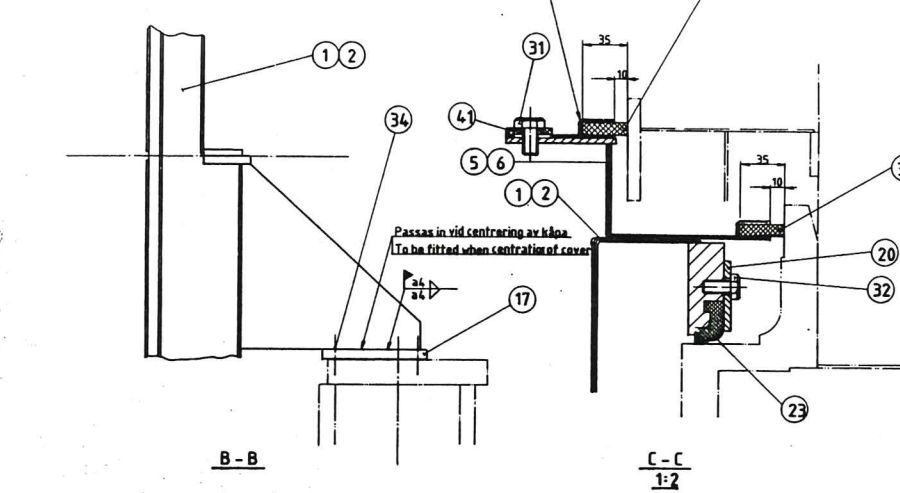
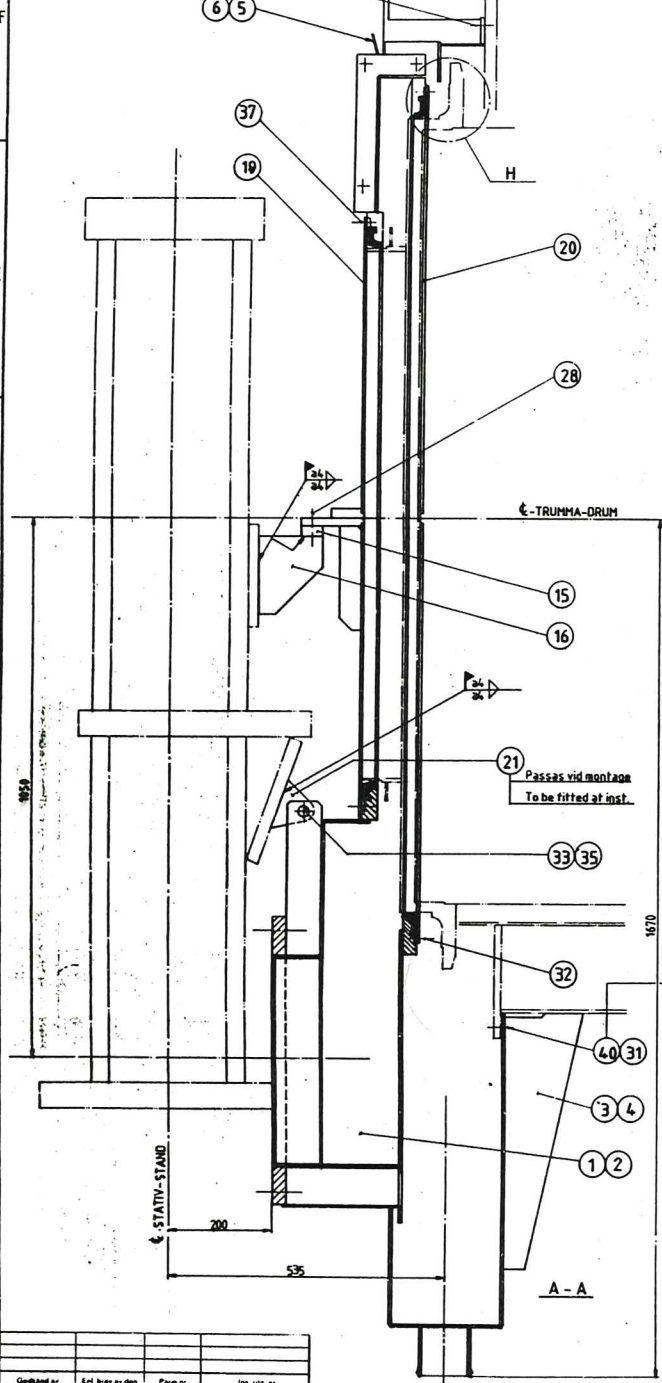
12231-34

TVÄTTPRESS 1555 RIV OCH TRANSPORTSKRUV SMST

WASH PRESS 1555 SHREDDER AND CONV SCREW ASSY

89-04-07

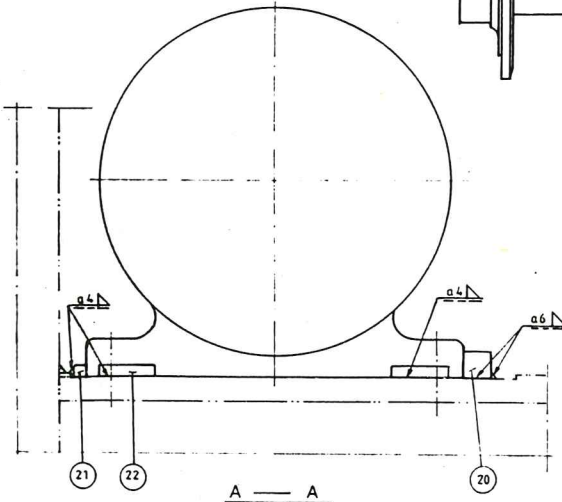
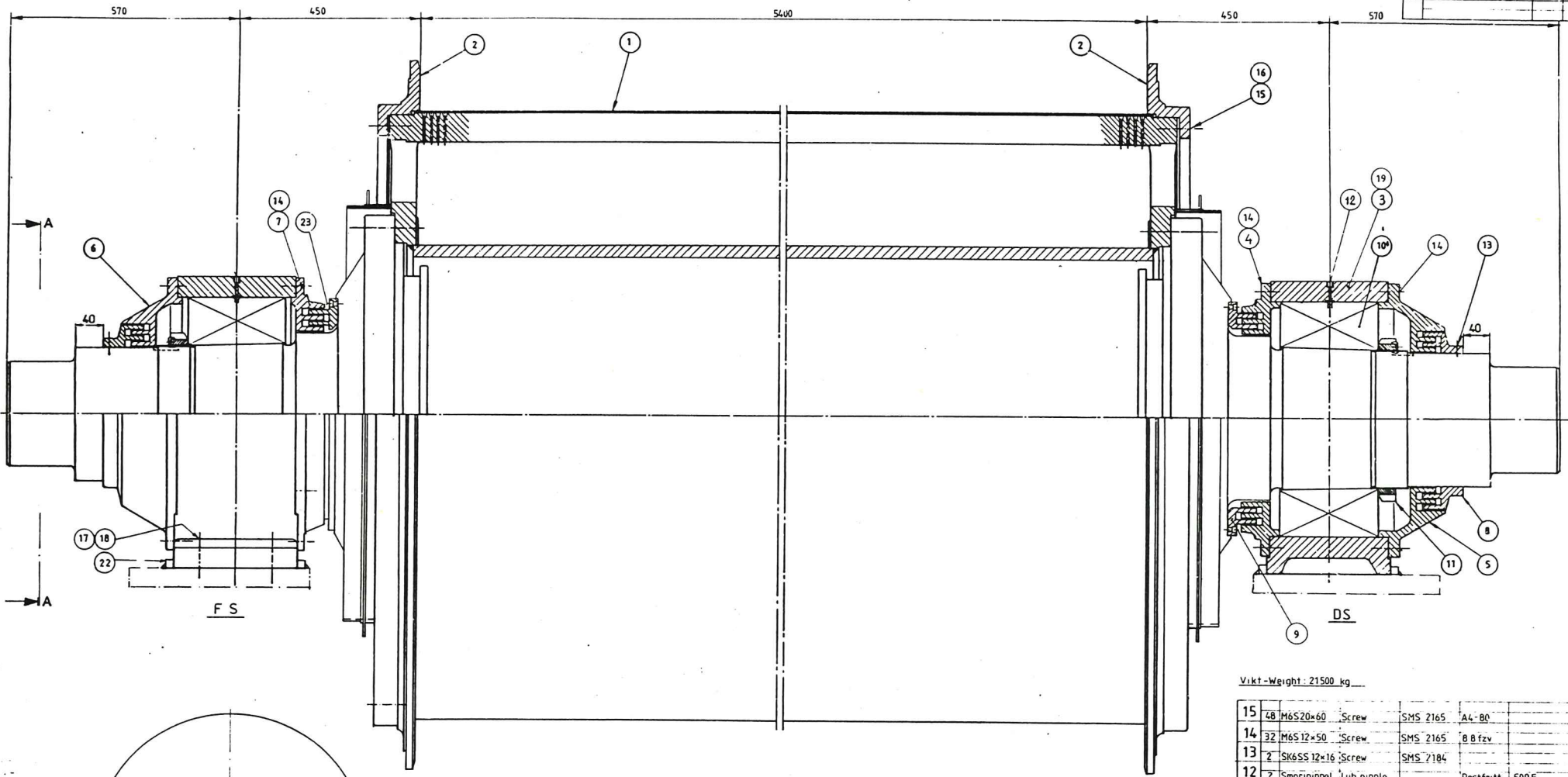
12231-35



F.S. ritad  
F.S. is drawn

The drawings, information and subject matter herein is the confidential, sole and exclusive property of KAMAT AB and is not to be copied, reproduced or used in any manner for any purpose whatsoever without its written consent or approval.					
Proj. No	BrF	Scale	1:5	12231-37	
Proj. No		Scale	1:5	12231-33	
TYVATTRESS 1555 KÄPÖR SMST WASHPRESS 1555 COVERS ASSY DWG			890510	890622	
SHEET 2 OF 2				12231-37	





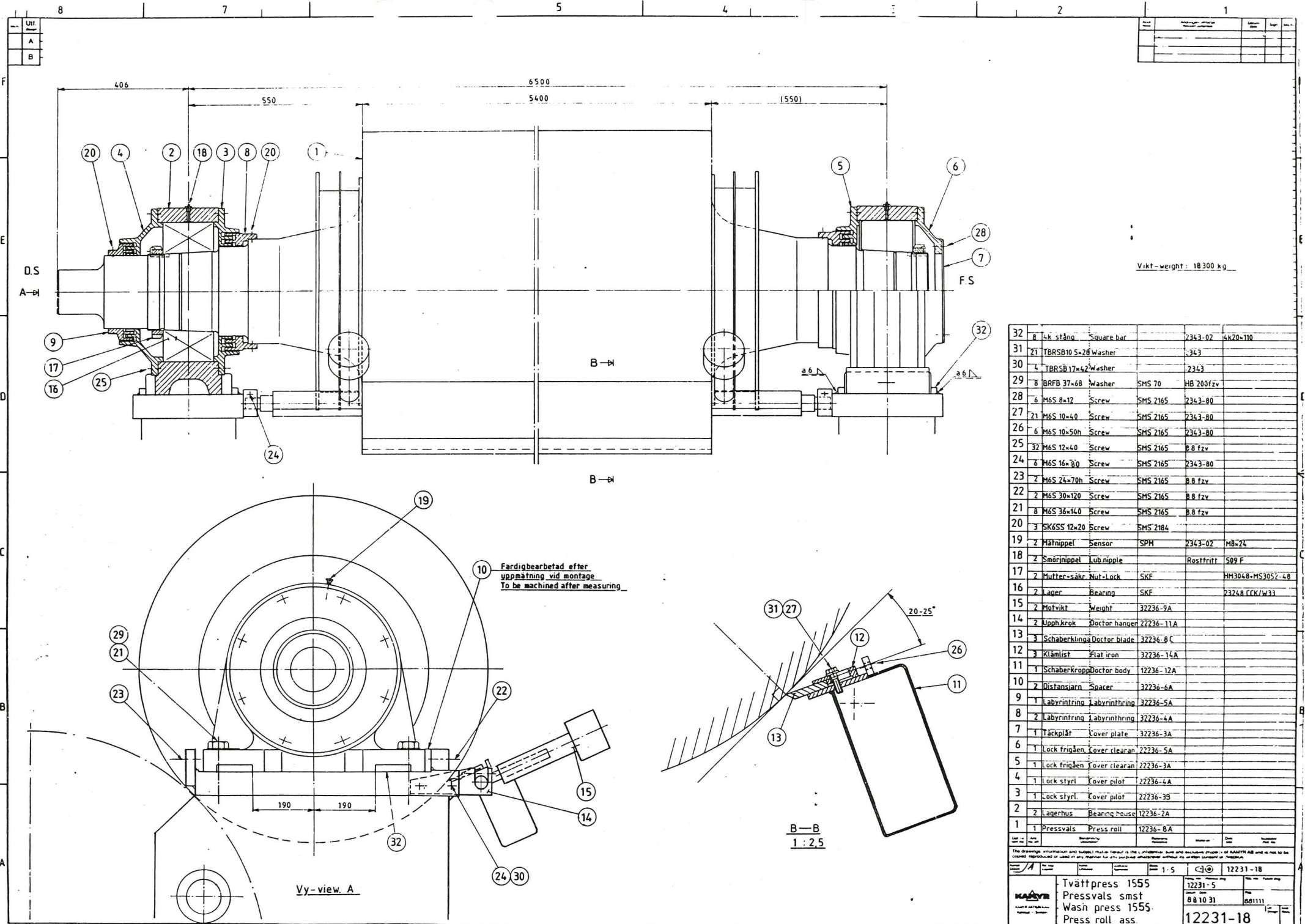
Vikt-Weight: 21500 kg

23	8	M6S 10x25	Screw	SS 2166	8.8 fzv
22	8	4k-stång	4k-bar	2343-02	4k 20x110
21	2	4k-stång	4k-bar	2343-02	4k 20x270
20	2	4k-stång	4k-bar	2343-02	4k 50x270
19	2	Matnippel	Sensor	SPM	2343-02 MBx26
18	8	BRFB 31x58	Washer	SMS 70	HB 200 fzv
17	8	M6S 30x120	Screw	SMS 2165	8.8 fzv
16	24	M6M 20	Nut	SMS 2175	A4-80

15	48	M6S20x60	Screw	SMS 2165	A4-80
14	32	M6S12x50	Screw	SMS 2165	8.8 fzv
13	2	SK6SS 12x16	Screw	SMS 2184	
12	2	Smornippel	Lub nipple		Rostfritt 509F
11	2	Mutter-Säkr	Nut - Lock	SKF	HM 3068-MS3068-64
10	2	Lager	Bearing	SKF	24168-CACK 30x43B
9	2	Labyrintring	Labyrinthring	22232-9A	
8	2	Labyrintring	Labyrinthring	32232-5A	
7	1	Lock frigående	Cover clearance	22232-6A	
6	1	Lock frigående	Cover clearance	22232-7A	
5	1	Lock styrlager	Cover pilot	22232-7B	
4	1	Lock styrlager	Cover pilot	22232-6B	
3	2	Lagerhus	Bearing house	12232-13A	
2	2	Gavelring	End ring	12232-27A	
1	1	Trumma	Drum	12232-20A	

The drawings, information and subject matter herein is the confidential, and proprietary property of HANSA AB and is not to be copied, reproduced or used in any manner for any purpose whatsoever without the written consent of HANSA AB.

1:5	12231-17
TVÄTTPRESS 1555	12231-6
TRUMMA SMST	1988.11.04
WASHPRESS 1555	12231-17
DRUM ASS	



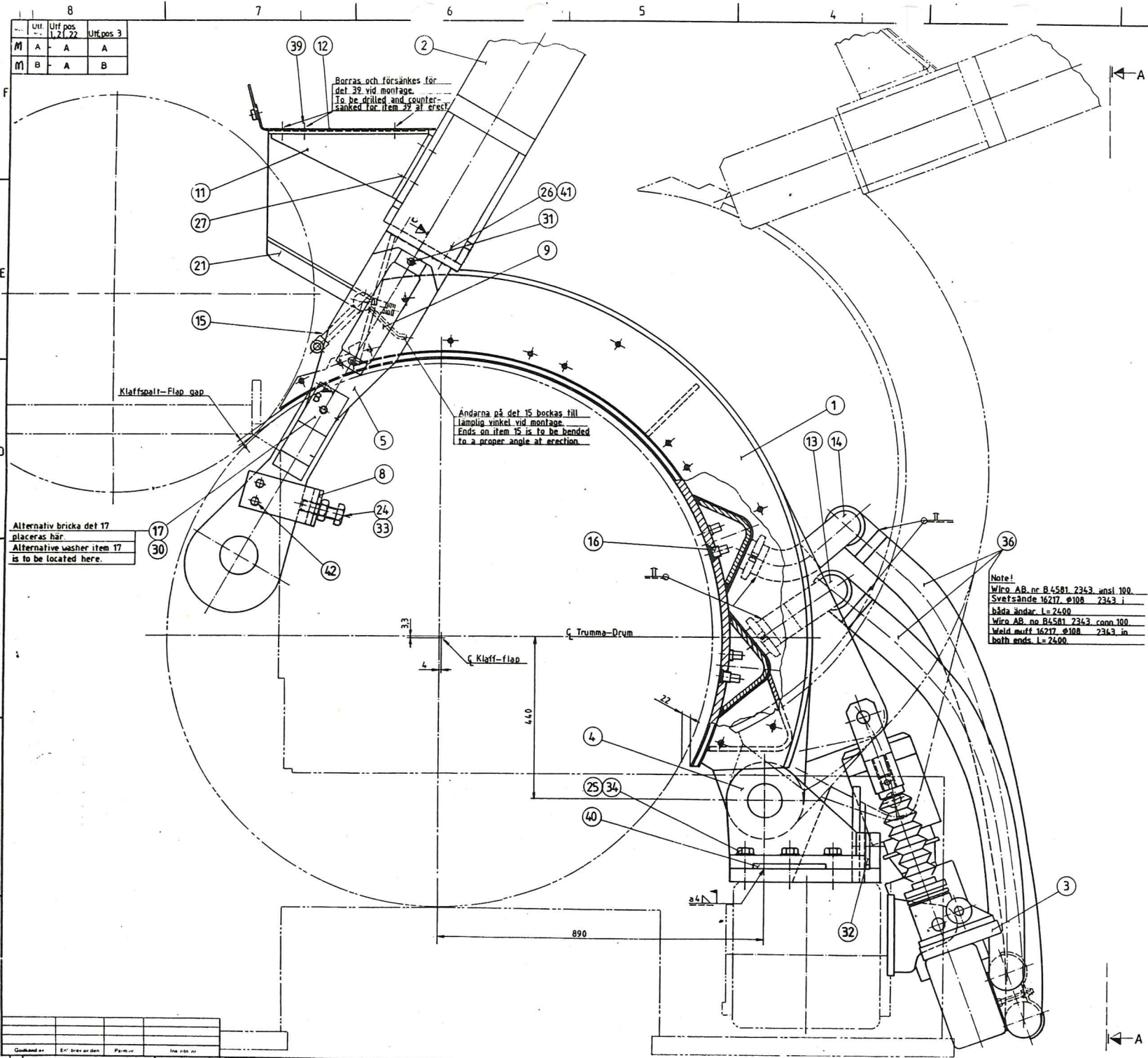
Vikt - weight : 18300 kg

32	8	Leik stång	Square bar	2343-02	4x70x110
31	21	TBR SB10 5x28	Washer	2343	
30	4	TBR SB17x42	Washer	2343	
29	8	BRFB 37x68	Washer	SMS 70	HB 200fzv
28	6	M6S 8x12	Screw	SMS 2165	2343-80
27	21	M6S 10x40	Screw	SMS 2165	2343-80
26	6	M6S 10x50h	Screw	SMS 2165	2343-80
25	32	M6S 12x40	Screw	SMS 2165	B 8 fzv
24	6	M6S 16x80	Screw	SMS 2165	2343-80
23	2	M6S 24x70h	Screw	SMS 2165	B 8 fzv
22	2	M6S 30x120	Screw	SMS 2165	B 8 fzv
21	8	M6S 36x140	Screw	SMS 2165	B 8 fzv
20	3	SK6SS 12x20	Screw	SMS 2184	
19	2	Hättnippel	Sensor	SPH	2343-02 HB=2L
18	2	Smörnippel	Lub nipple		Rostfritt 509 F
17	2	Mutter-säkr	Nut-lock	SKF	HM304B-MS3052-48
16	2	Lager	Bearing	SKF	2324 R CCK/W33
15	2	Motvikt	Weight	32236-9A	
14	2	Upph.krok	Doctor hanger	22236-11A	
13	3	Schaberklina	Doctor blade	32236-9 C	
12	3	Klämlist	Flat iron	32236-14A	
11	1	Schaberkropp	Doctor body	12236-12A	
10	2	Distansjarn	Spacer	32236-6A	
9	1	Labyrintring	Labyrinthring	32236-5A	
8	2	Labyrintring	Labyrinthring	32236-4A	
7	1	Täckplåt	Cover plate	32236-3A	
6	1	Lock frigden	Cover clearan	22236-5A	
5	1	Lock frigden	Cover clearan	22236-3A	
4	1	Lock styrl	Cover pilot	22236-4A	
3	1	Lock styrl	Cover pilot	22236-3B	
2	2	Lagerhus	Bearing house	12236-2A	
1	1	Pressvals	Press roll	12236-8A	

The drawings, information and subject matter herein is the confidential, trade and exclusive property of MAATVE AB and is not to be copied, reproduced or used in any manner for any purpose whatsoever without its written consent or approval.

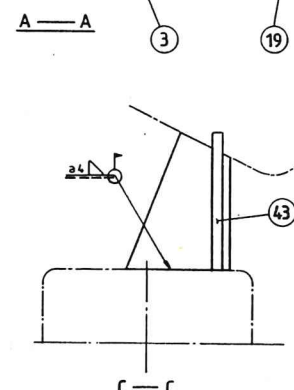
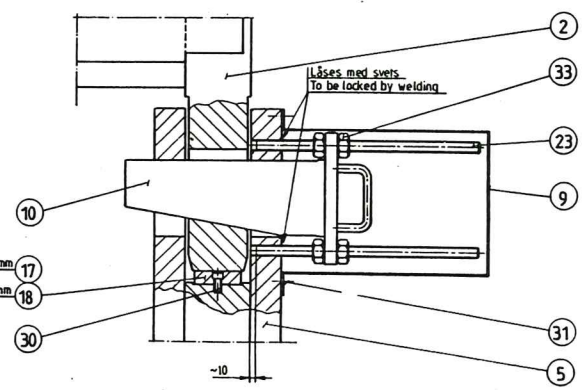
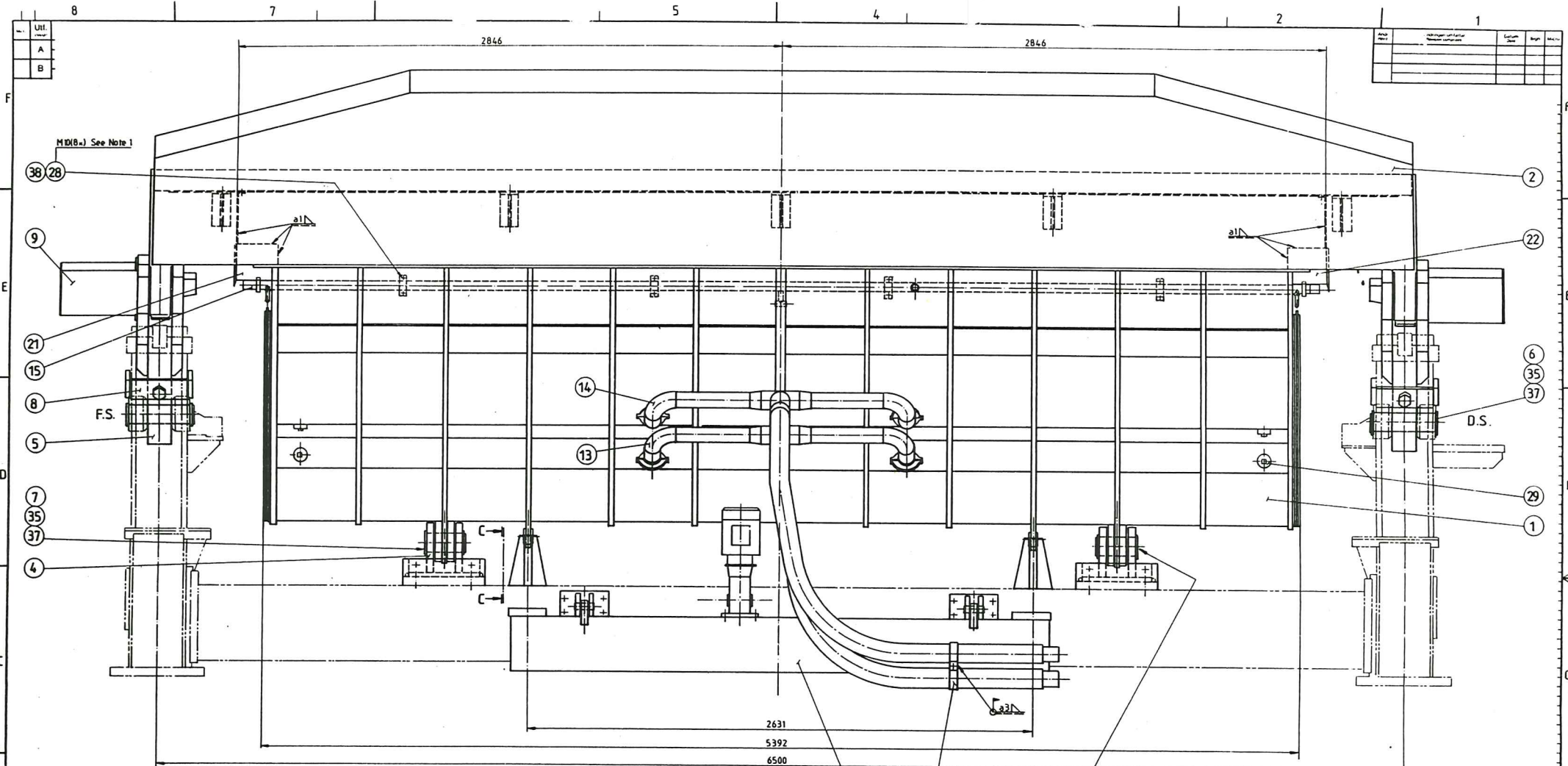
MAATVE  
12231-18  
1-5  
12231-5  
Wäprens smst  
Wash press 1555  
Press roll ass.  
8 8 10 31  
681111  
12231-18





Vikt—Weight ~ 10 200 kgs

43	2	Klaffstöd	Flap support	22234-61A		
42	8	M6S16x50	Screw	SS-ISO 4017	2343	-80
41	28	HRB 21x36	Washer	SS70	2343	
40	4	Fvrkantst	Square bar		2343	15x200
39	22	M6S 12x25	Screw	DIN 7991	2343	-86
38	4	Rörklammer	Tube clamp	SS 3041	2343	
37	4	Smörjnippl	Grease nipple	SS 1568	2346	509-F-Rostrl
36	2	Slang	Flexible hose			Se not/See note
35	4	SpA 100	Retaining ring	SS 1581	Kad	
34	16	HRB 25x45	Washer	SS 70	2343	
33	10	M6M 24	Nut	SS-ISO 4032	2343	-80
32	2	Distans	Spacer	32234-28		
31	4	M6S 10x20	Screw	SS 2166	2343	-80
30	4	M6S 12x25	Screw	SS 2166	2343	-80
29	4	Propp	Plug	R 238	2343	DN 50
28	8	M6S 10x16	Screw	SS-ISO 4017	2343	-80
27	20	M6S 12x30	Screw	SS-ISO 4017	2343	-80
26	28	M6S 20x60	Screw	SS-ISO 4017	2343	-80
25	16	M6S 24x80	Screw	SS-ISO 4014	2343	-80
24	2	M6S 24x100	Screw	SS-ISO 4014	2343	-80
23	4	MHG 24x430	Screw	DIN 975	2343	
22	1	Stänklpl	DS Splash guard	12234-61C		
21	1	Stänklpl	ES Splash guard	12234-60C		
20	2	Distansbr	Spacer	42234-5A		
19	1	Hållare	Holder	32234-24A		
18	2	Distansbr	Spacer	32234-10B		
17	2	Distansbr	Spacer	32234-10A		
16	524	Dysa	Nozzle	42234-3A		
15	1	Spolrör	Wash pipe	22234-57A		
14	1	Fördelnrör	Dist pipe	32234-23A		Ovre/Upper
13	1	Fördelnrör	Dist pipe	32234-22A		Nedre/Lower
12	1	Skyddsäck	Platform	12234-59A		
11	5	Konsol	Bracket	32234-21A		
10	2	Kil	Wedge	22234-14A		
9	2	Skydd	Cover	22234-13A		
8	2	Stopp	Stop	22234-12A		
7	2	Axel	Shaft	22234-56A		
6	2	Axel	Shaft	22234-10A		
5	2	Dragstäng	Carriage beam	22234-9A		
4	2	Gångjärn	Hinge	12234-58A		
3	1	Domkraftsarn	Jack arm	12234-56C		
2	1	Bygelbalk	Lamp beam	12234-55A		
1	1	Tvättklaff	Wash flap	12234-39C		



Distansbrickor endast på drivsidan.  
Tjocklek bestäms vid montage.  
Spacers only on driving side.  
Thickness to be decided at installation.

KLAFFSPALT—FLAPGAP—12mm  
KLAFFSPALT—FLAPGAP—10mm  
See Note 2

Note 1: Borrar och gangas vid montage.  
To be drilled and threaded at installation.

Note 2: Det 17 och 18 färdigbearb sedan klaffspalten har installits på 12 resp. 10 mm.  
Item 17 and 18 to be machined after the flapgap has been positioned at 12 and 10 mm.  
Det 17 markes/to be marked: Klaffspalt—Flap gap 12mm.  
Det 18 markes/to be marked: Klaffspalt—Flap gap 10mm.

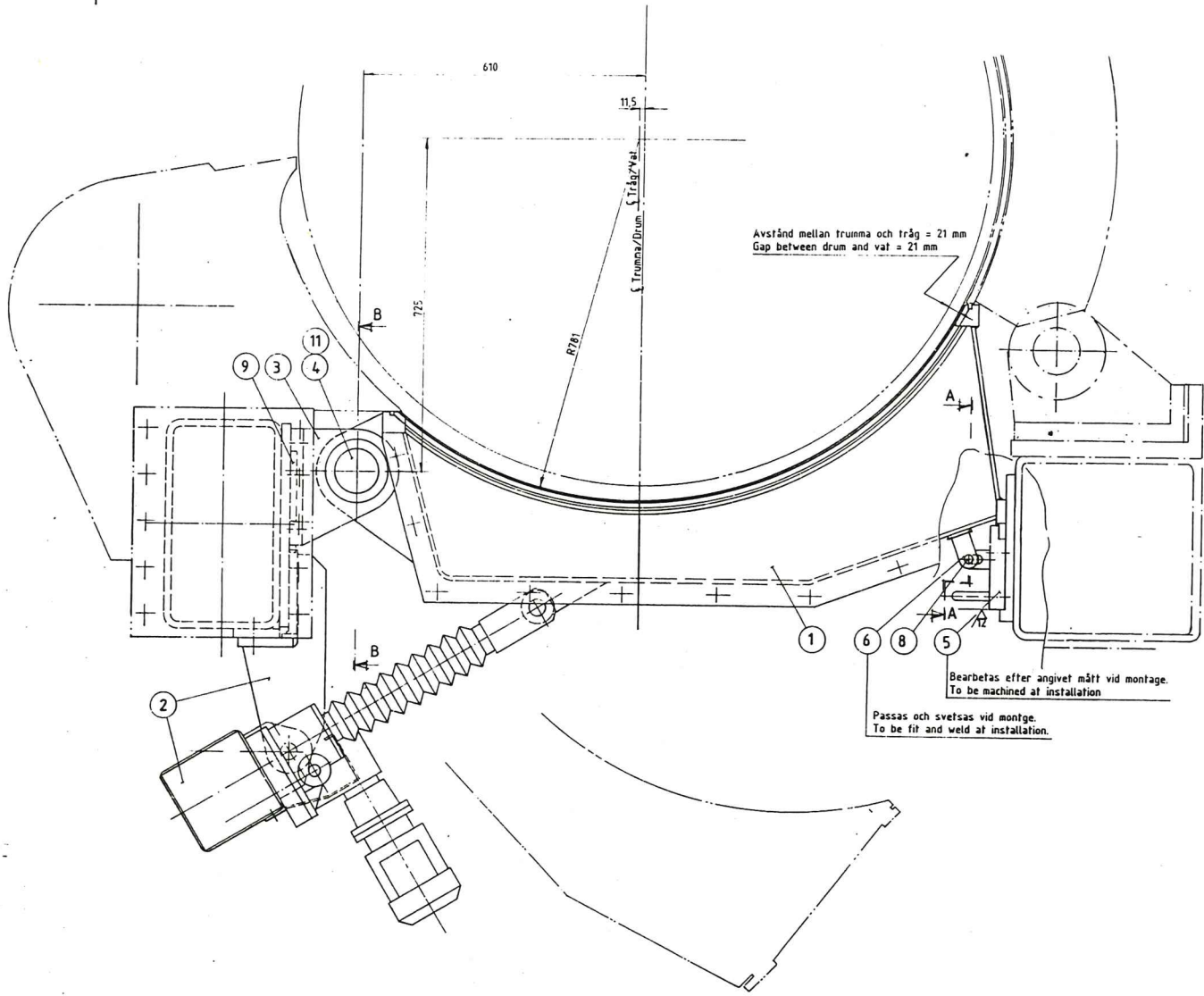
Godkänd av	Est. given av den	Placerad	Ins. rida av

Proj. No.	12231-22
Rev.	
Titel	TVÄTTPRESS TVÄTTKLAFF, SMST WASH PRESS 1555 WASH FLAP, ASS DWG
Skapad	12231-9
Reviderad	89-01-20
Skapad	12231-22



Urf	Urf.Det.1	Urf.Det.2
A	A	A
B	A	B

Q	Del. G. Badc.	199105	JA	M
---	---------------	--------	----	---



Vikt / Weight: 2400 kg

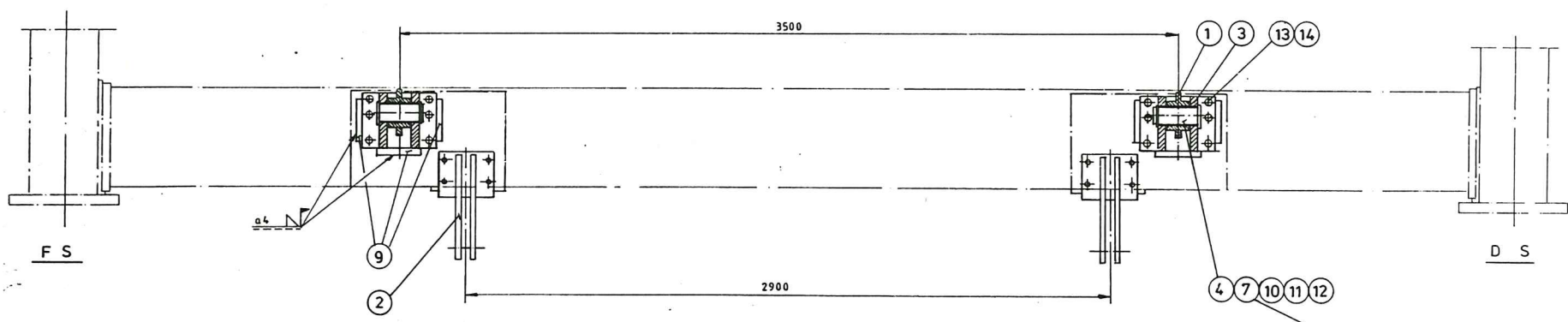
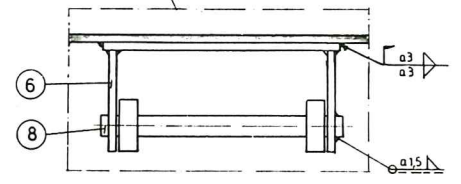
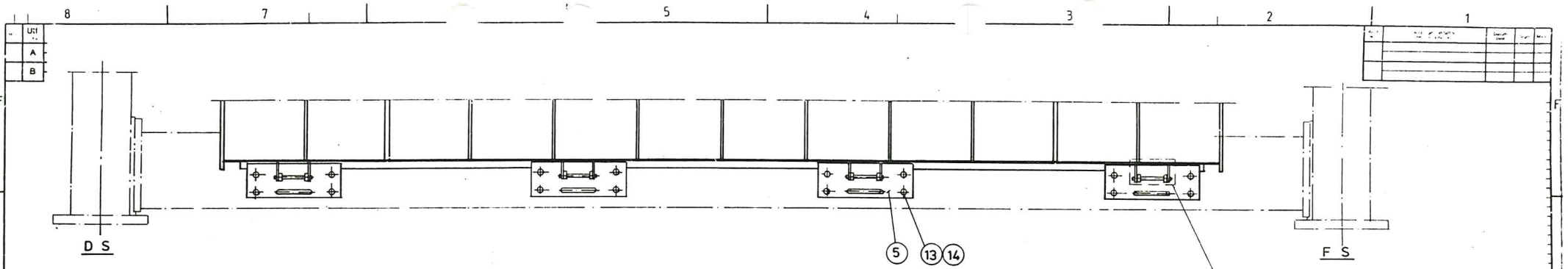
14	20	HRB 25 x 45	Washer	SS 70	A4 - 750
13	28	M6S 24 x 80	Screw	ISO 4014	2343-80
12	2	SqA80	Retaining ring	SS 1581	Kad
11	2	Smörnippel	Grease nipple	SS 1568	2346 509-F-Rustfri
10	2	Lagerbussning	Slide bearing	SS 776	JM 3 80F7/95x100
9	6	k-k stång	Square bar		2343-02 20x20x 200
8	4	Rundstång	Round bar	2343	Ø16x185
7	2	Distansbricka	Spacer	42234-5A	
6	4	Fäste	Bracket	32234-16A	
5	4	Stödplåt	Plate	32234-13A	
4	2	Axel	Shaft	22234-11A	
3	2	Gångjärn	Hinge	22234-53A	
2	1	Domkraftsarr	Screw jack	12234-52	
1	1	Tråg	Val	12234-44	

The drawings information and subject matter therein is the intellectual property of KÄMPER AB and is not to be copied, reproduced or used in any manner for any purpose whatsoever without its written consent in advance.

TVATTPRESS 1555  
 TRÅG  
 SAMMANSTÄLLNING  
 WASH PRESS 1555  
 VAT

12231-10  
 881214  
 12231-25

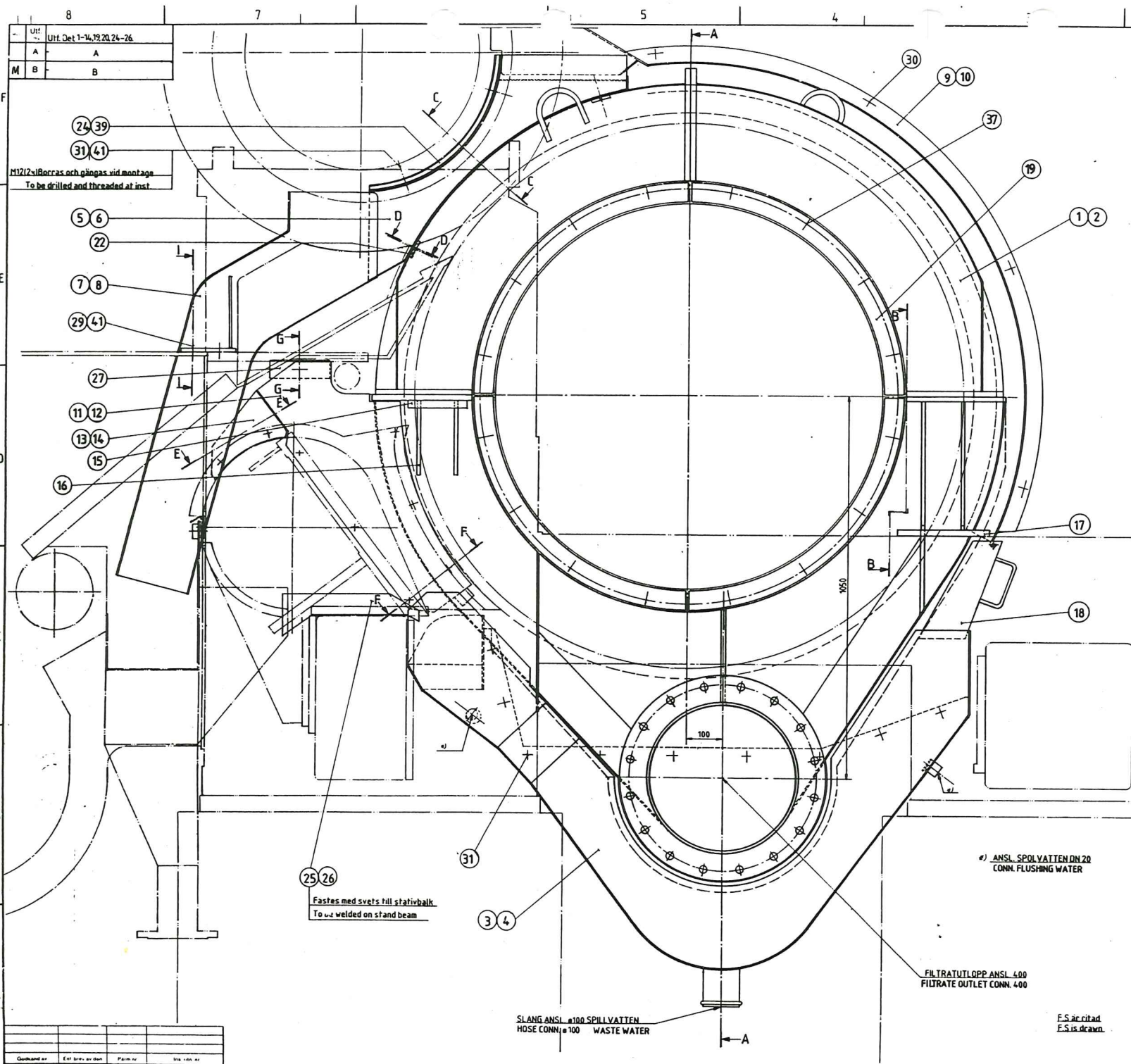
Godkänd av	Enkelt ansvar	Plats nr	Ing. datum



Distansbrickor endast på DS  
 Tjocklek bestämes vid montage  
 Spacers only on DS  
 Thickness to be decided of installation


The drawings are to be read and subject matter thereof to be interpreted in accordance with the standards of the International Organization for Standardization (ISO) and the Swedish Standards Institute (SIS).			
Scale	1:10	Sheet No.	12231-25
Project No.	12231-10	Part No.	881214
Manufacturer	TRÄG SMST	Product Name	WASHPRESS 1555
Material	VAT ASS.	Sheet 2 of 2	12231-25





Urf	Urf Det 1-14, 19, 20, 24-26
A	A
M	B

Def	7 o 8 andr	891718	TG
-----	------------	--------	----

M12 i Borrnas och gängas vid montage  
To be drilled and threaded at inst.

Fastes med svets till stativbalk  
To be welded on stand beam

ANSI SPOLVATTEN DN 20  
CONN. FLUSHING WATER

FILTRATUTLOPP ANSI 400  
FILTRATE OUTLET CONN. 400

SLANG ANSI 100 SPILLVATTEN  
HOSE CONN. 100 WASTE WATER

F.S är ritad  
F.S is drawn

För centring till trumman av det 1 och 2 användes distansblock 42238-11A  
se det H. ark 2.  
For centration to drum of item 1 and 2 use distance block 42238-11A  
see item H. sheet 2.

VIKT-WEIGHT: 700 Kg.

42	70	HRB 13x24	Washer	SS 70	2343	
41	12	TBR5B 13x36	Washer		2343	
40	1	Gummiduk	Rubber Fabric	Kval 5423	3-	
39	2	Gummiduk	Rubber Fabric	Kval 5423	10x60x470	
38	2	Gummiduk	Rubber Fabric	Kval 5423	10x40x900	
37	32	MPS 10x40	Stud	SS 1460	2343-80	
36	4	M6M 12	Nut	SS-ISO 4032	2343-80	
35	2	M6M 16	Nut	SS-ISO 4032	2343-80	
34	8	M6S 16x40	Screw	SS-ISO 4017	2343-80	
33	2	M6S 16x50	Screw	SS-ISO 4017	2343-80	
32	48	M6S 10x20	Screw	SS-ISO 4017	2343-80	
31	30	M6S 12x20	Screw	SS-ISO 4017	2343-80	
30	16	M6S 12x25	Screw	SS-ISO 4017	2343-80	
29	4	M6S 12x30	Screw	SS-ISO 4017	2343-80	
28	4	M6S 16x35	Screw	SS-ISO 4017	2343-80	
27	2	Plattstång	Flat bar		2343-02	50x10x165
26	1	Stänksplåt FS	Splashplate	22238-18	□	
25	1	Stänksplåt DS	Splashplate	22238-19	□	
24	2	Tätninghållare	Sealing holder	22238-22	□	
23	4	Tätningring	Sealing Ring	32238-8 A		Kapas vid montage To be cut at inst.
22	2	Fäste	Holder	42238-16 A		
21	2	Fäste	Holder	42238-15 A		
20	8	Klämjärn	Clamping pla	32238-25 □		
19	8	Klämjärn	Clamping pla	42238-9 □		
18	2	Hängränna	Gutter	22238-21 A		
17	2	Platta	Plate	42238-8 A		
16	4	Plåt	Plate	42238-7 A		
15	2	Hållare	Holder	42238-6 A		
14	1	Stänksplåt DS	Splashplate	22238-13 □		
13	1	Stänksplåt FS	Splashplate	22238-12 □		
12	1	Stänksplåt DS	Splashplate	32238-29 □		
11	1	Stänksplåt FS	Splashplate	32238-28 □		
10	1	Tvättkylk DS	Channel	12238-29 □		
9	1	Tvättkylk FS	Channel	12238-28 □		
8	1	Ränna avt. DS	Ch. Pick-up Dev	12238-9 □		
7	1	Ränna avt. FS	Ch. Pick-up Dev	12238-8 □		
6	1	Ränna P.v. DS	Ch. Pressroll	12238-27 □		
5	1	Ränna P.v. FS	Ch. Pressroll	12238-26 □		
4	1	Uppsrän DS	Channel	12238-25 □		
3	1	Uppsrän FS	Channel	12238-24 □		
2	1	Filterkåpa DS	Filter cover	12238-23 □		
1	1	Filterkåpa FS	Filter cover	12238-22 □		

The drawings, information and subject matter herein is the confidential, firm and exclusive property of KAMTR AB and is not to be copied, reproduced or used in any manner for any purpose whatsoever without the written consent of KAMTR AB.

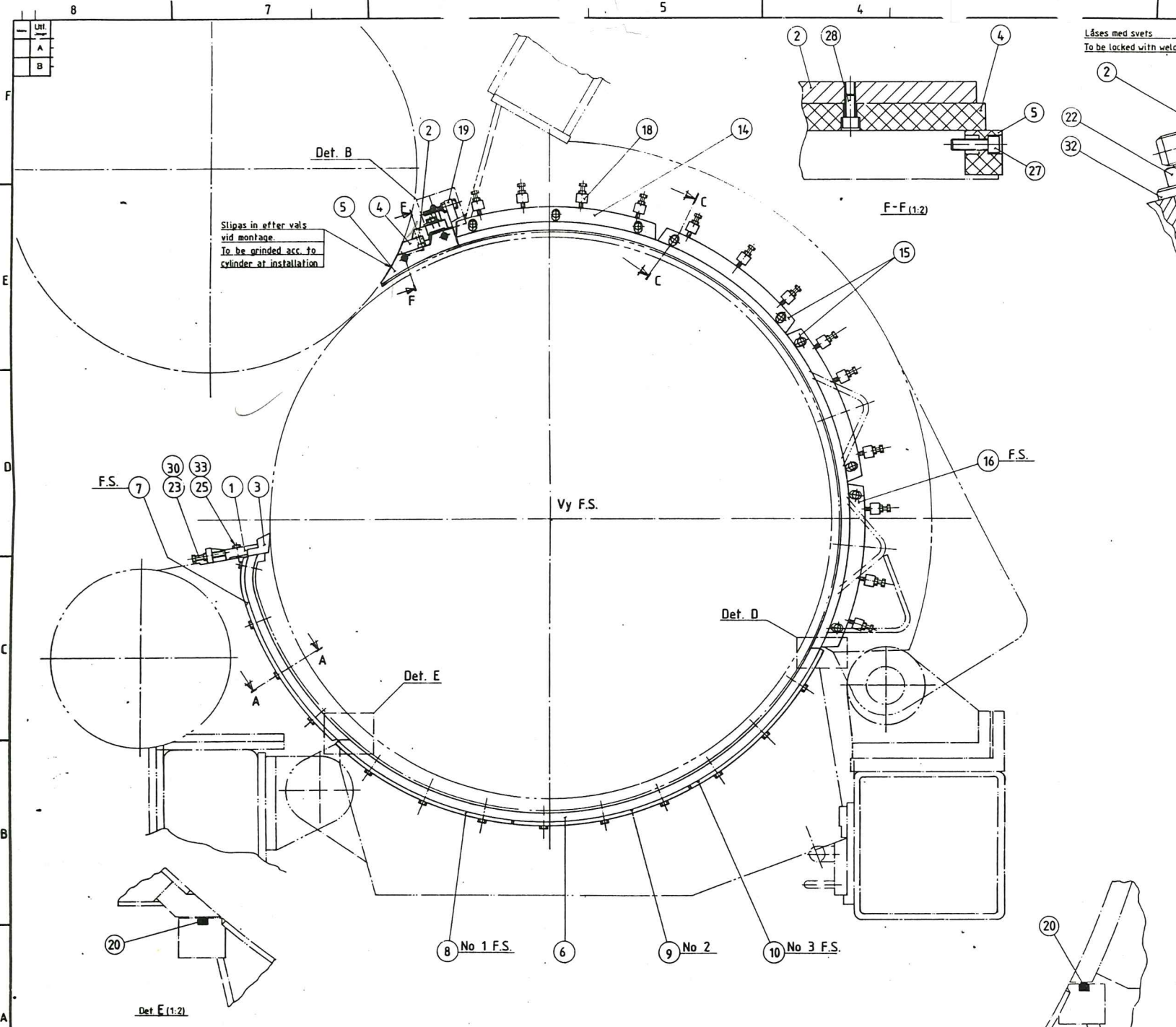
Brf 1 S 12231-37

12231-33

890502 890525

12231-37

SHEET 1 OF 2



Ändr. nr	Ändr. datum	Ändr. av	Orsak	Övrigt

Vikt/Weight = 240 kg

33	21	TBR5B 13x36	Washer		2343	
32	18	TBR5B 17x42	Washer		2343	
31	26	HRB 10.5x22	Washer	SS 70	A4	
30	32	M6M 12	Nut	ISO 4032	2343-80	
29	6	M6M 16	Nut	ISO 4032	2343-80	
28	12	M6S 12x30	Screw	ISO 4762	2343-80	
27	22	M6S 12x40	Screw	ISO 4762	2343-80	
26	26	M6S 10x30	Screw	ISO 4017	2343-80	
25	21	M6S 12x50	Screw	ISO 4017	2343-80	
24	26	M6S 12x60	Screw	ISO 4017	2343-80	Helgångad Full threaded
23	6	M6S 12x80	Screw	ISO 4017	2343-80	Helgångad Full threaded
22	18	M6S 16x50	Screw	ISO 4017	2343-80	
21	6	M6S 16x80	Screw	ISO 4017	2343-80	Helgångad Full threaded
20	2	Gummisnöre	rubberstring	x-val 5169	ø10x5400	
19	6	Fäste	Bracket	42238-20A		
18	26	Fäste	Square iron	42238-2 A		
17	1	Klamlist	Clamp plate	32238-17 A		
16	1	Klamlist	Clamp plate	32238-16 A		
15	4	Klamlist	Clamp plate	32238-15 A		
14	2	Klamlist	Clamp plate	32238-14 A		
13	1	Klamlist	Clamp plate	32238-10 B		
12	1	Klamlist	Clamp plate	32238-12 A		
11	1	Klamlist	Clamp plate	32238-13 A		
10	1	Klamlist	Clamp plate	32238-12 B		
9	2	Klamlist	Clamp plate	32238-11 A		
8	1	Klamlist	Clamp plate	32238-10 A		
7	1	Klamlist	Clamp plate	32238-9 A		
6	2	Tätning	Sealing ring	32238-8 A		Käpps vid montage To be cut at inst.
5	2	Klots	Sealing block	32238-36A		
4	3	Klamflist	Flap sealing	32238-35A		
3	3	Inloppslist	Inlet list	32238-5C		
2	3	Tätning	Holder	22238-36A		
1	3	Tätning	Holder	22238-35A		

Use as per instructions

The drawings, information and subject matter thereof is the confidential, sole and exclusive property of KAMMPP AB and is not to be copied, reproduced or used in any manner for any purpose whatsoever without its written consent or approval.

Proj. nr	12231-5	Rev	1
Ändr. nr	990523	Ändr. av	63070

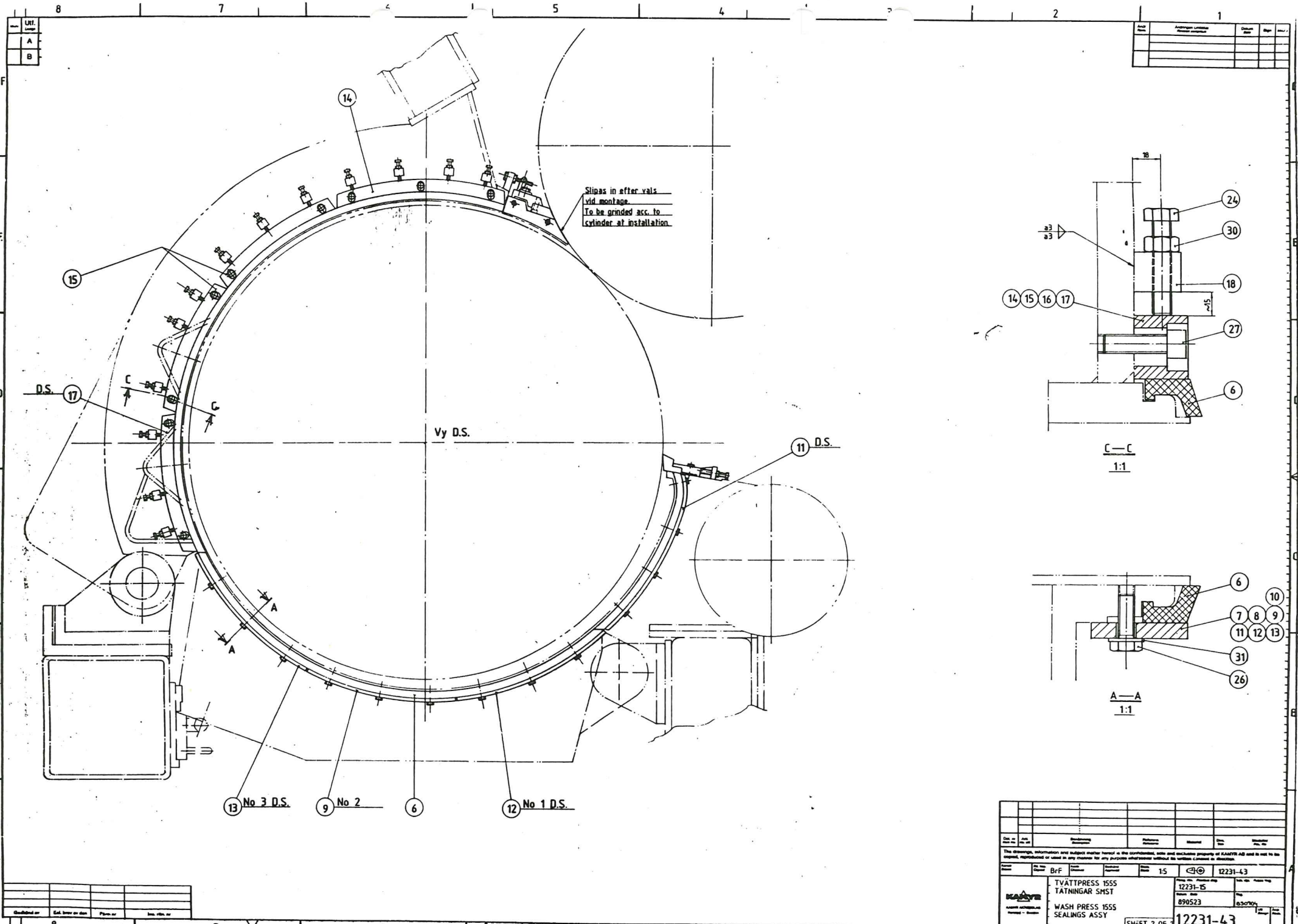
TVATTPRESS 1555  
TÄTNINGAR SHST  
WASH PRESS 1555  
SEALINGS ASSY

Sheet 1 of 2

12231-43

Utl.	Ändr. nr	Ändr. datum	Ändr. av	Orsak	Övrigt
A					
B					





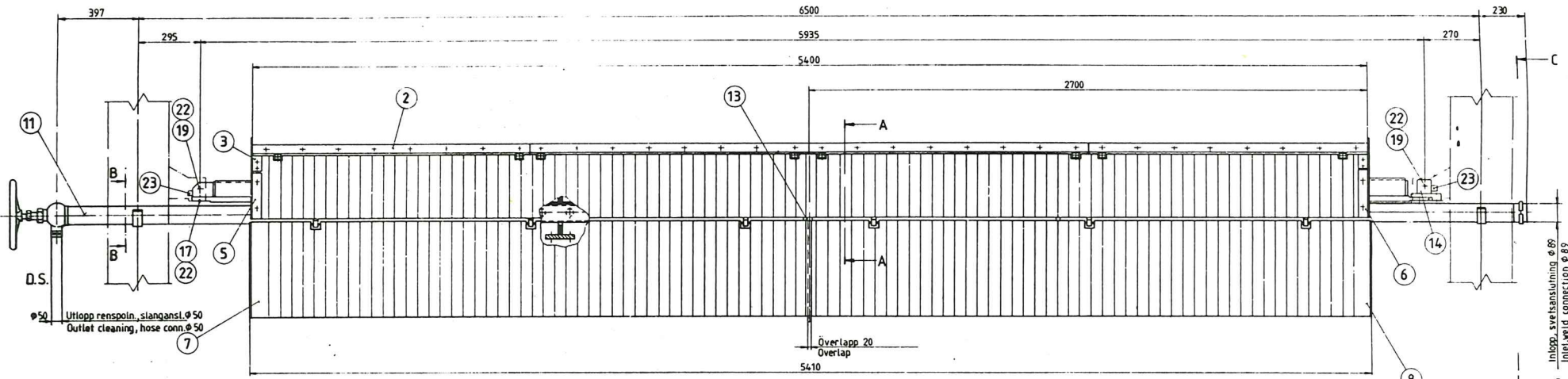
Author	Checked	Approved	Scale	Sheet

UNIT	
A	
B	

Doc. No.	BrF	15	12231-43
Project	TVÄTTPRESS 1555		
Part	TÄTNINGAR SMST		
Rev.	890523		
Issue Date	03/30/04		
WASH PRESS 1555		SEALINGS ASSY	
SHEET 2 OF		12231-43	

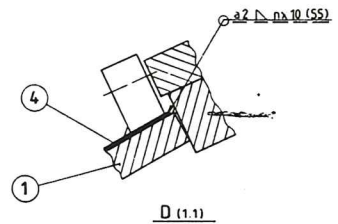
Urf. det. 1,7,8,10,11,14	4
A	D
B	E

Rev.	Ändring	Utförda	Avgränsad



Vikt / Weight = 1010 kg

Urtag för 8 st kläckor göres i det 4 vid montage.  
8 pieces of hole are to be made in item 4 at erection



Hål M12(1x) Borras och gängas vid montage.  
Hole M12(1x) is drilled and threaded at erection

Urtaa i det 7 och 8 göres vid montage.  
Cut in item 7 and 8 at erection

Hål M12(2x) Borras och gängas vid montage.  
Hole M12(2x) is drilled and threaded at erection

Längden anpassas vid montage.  
The length to be adjusted at erection.

Svetsas så att de slitsade hålen överensstämmer med schaberhållarens slitsade hål i ändarna.  
The slotted hole of the plate to be accordance with the hole in the ends of in doctor holder.

935 f Trumma Drum

Efter inställning av dysvinkel fastsvetsas klamman mot roret vid D.S.  
After adjusting the angle of nozzles, weld the pipe clip to the pipe at D.S.

A-A  
1:2.5

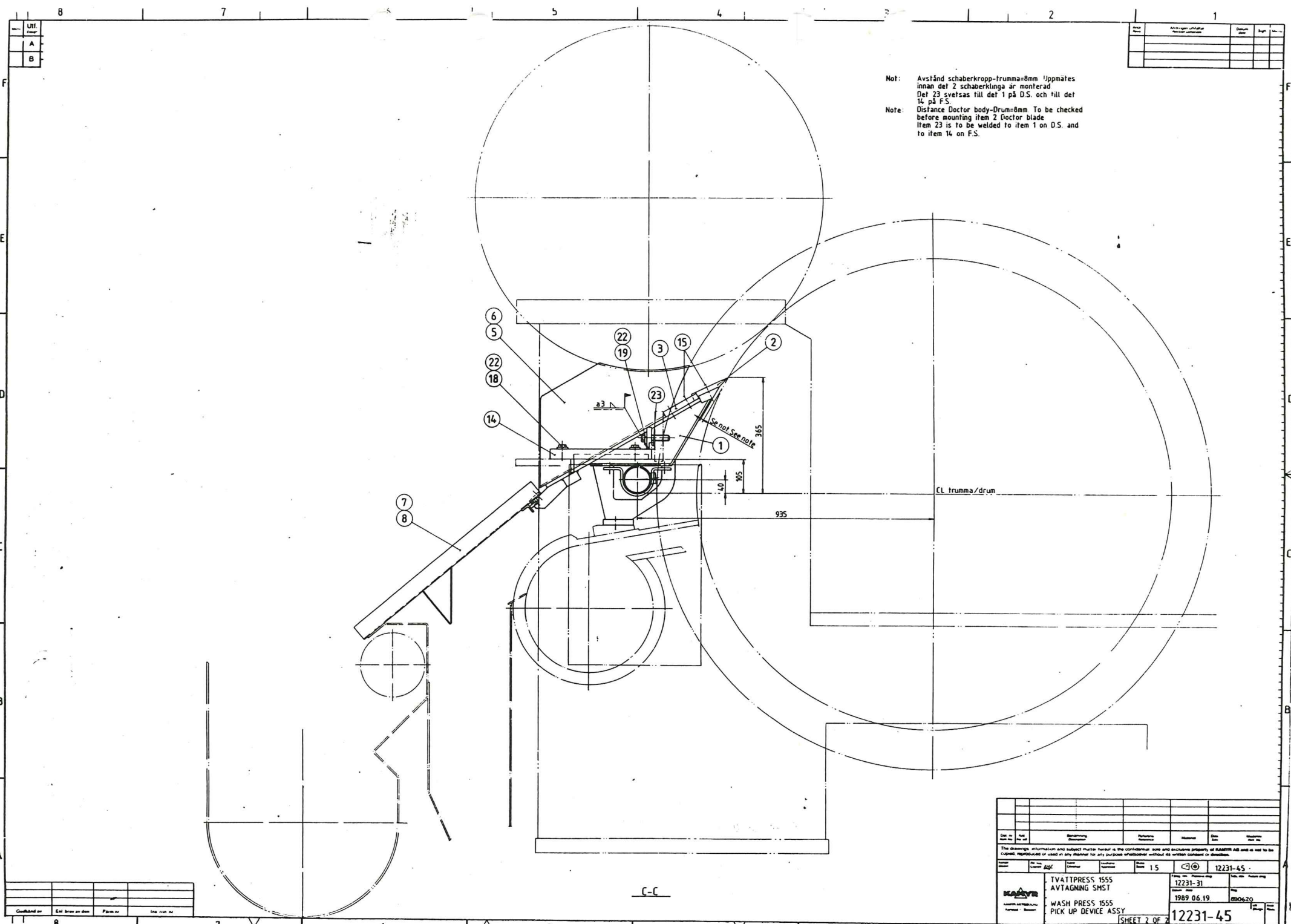
B-B  
1:2.5

23	2	4x-stång	Square iron	73L3-02	20x20x20
22	11	TBR5B 17x42	Washer	KMS 349	2343
21	1	TBR5B 13x36	Washer	KMS 349	2343
20	8	MSK6SS 10x25	Screw	SS 2184	2343
19	2	M6S 16x70	Screw	SS-ISO L017	2343-80
18	3	M6S 16x60	Screw	SS-ISO L014	2343-80
17	6	M6S 16x50	Screw	SS-ISO L017	2343-80
16	11	M6S 12x30	Screw	SS-ISO L017	2343-80
15	40	Schaberskruv	Screw	42235-4A	
14	1	Schaberfaste	Doctor holder	32235-6I	
13	1	Klamma	Pipe clip	32235-5B	
12	2	Klamma	Pipe clip	32235-3B	
11	1	Spritsrör	Spray pipe	22235-12I	
10	2	Platta	Plate	42235-3I	
9	6	Låsplåt	Lock plate	42235-2A	
8	1	Ledplåt F.S	Lead plate F.S	22235-10I	
7	1	Ledplåt D.S	Lead plate D.S	22235-9I	
6	1	Sidplåt F.S	Side plate F.S	22235-7B	
5	1	Sidplåt D.S	Side plate D.S	22235-1B	
4	1	Massbord	Pulp shoot	32235-3I	
3	2	Gavelstift	Endjust	42235-1A	
2	4	Schaberkläng	Doctor blade	32235-2C	
1	1	Schaberkröpp	Doctor body	12235-3I	

The drawings, information and subject matter herein is the confidential and exclusive property of KAMAT AB and is not to be copied, reproduced or used in any manner for any purpose whatsoever without its written consent or its license.

TVATTPRESS 1555  
 AVTAGNING SMST  
 1989 06 19  
 WASH PRESS 1555  
 PICK UP DEVICE ASSY  
 SHEET 1 OF 2  
 12231-45  
 12231-31  
 830410





Not: Avstånd schaberkropp-trumma=8mm Uppmätas innan del 2 schaberklunga är monterad. Del 23 svejtsas till del 1 på D.S. och till del 14 på F.S.  
 Note: Distance Doctor body-Drum=8mm. To be checked before mounting item 2 Doctor blade. Item 23 is to be welded to item 1 on D.S. and to item 14 on F.S.

Ändr. nr	Ändringsförklaring	Utförare	Datum

UZI	Revider
A	
B	

Proj. nr	Ändr. nr	Ändringsförklaring	Utförare	Datum	Blad nr	Totalt antal blad
The drawings, information and subject matter hereof is the confidential and exclusive property of KAMBYR AB and is not to be copied, reproduced or used in any manner for any purpose whatsoever without its written consent or direction.						
					15	
						12231-45
TVATTPRESS 1555 AVTAGNING SMST <b>KAMBYR</b> WASH PRESS 1555 PICK UP DEVICE ASSY				12231-31 1989 06 19 890620 <b>12231-45</b>		
SHEET 2 OF 2						

Översikt över	End. tecken av den	Plått nr	100 1101 10

C-C